

ES e3 Schifflli and Chenille self extracting exe installation instructions

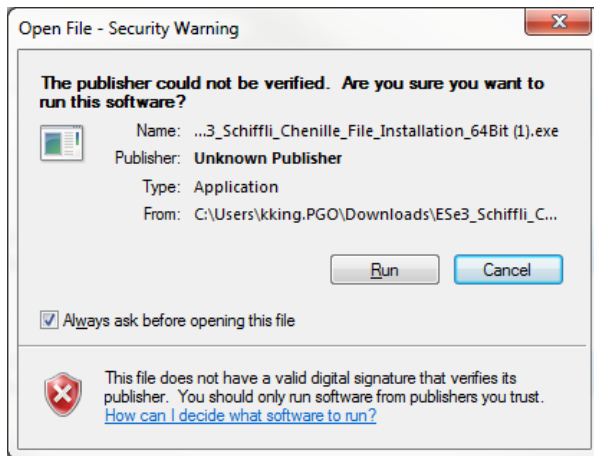
Download the self extracting .exe from the Wilcom website at the following link:

<http://www.wilcom.com.au/GetHelp/Support/DownloadCenter.aspx>

Only download this file from the Wilcom website.

ES e3 Schifflli and Chenille file installation for 64bit Windows	This self extracting installation adds Schifflli and Chenille files to your e3 installation. (Only valid if you have the schifflli and chenille elements enabled)	Download
ES e3 Schifflli and Chenille file installation for 32bit Windows	This self extracting installation adds Schifflli and Chenille files to your e3 installation. (Only valid if you have the schifflli and chenille elements enabled)	Download

Open the exe file and accept the security warning by clicking Run

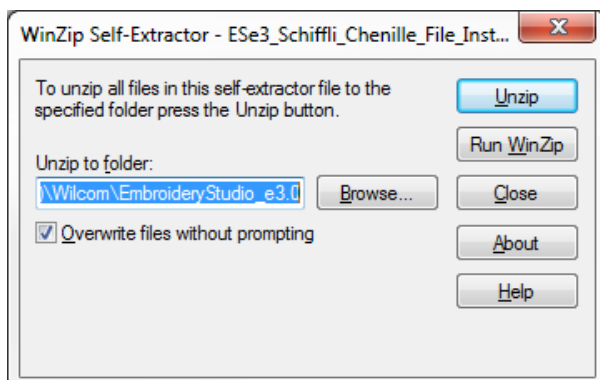


The self extracting zip will install the Schifflli and Chenille files to the following folder locations.

C:\Program Files (x86)\Wilcom\EmbroideryStudio_e3.0 **(64bit)**

C:\Program Files\Wilcom\EmbroideryStudio_e3.0 **(32bit)**

Adjust the folder path if ES is not installed in the default installation path.



Click Unzip to install.