

TRUESIZER E<sub>3</sub> Pro

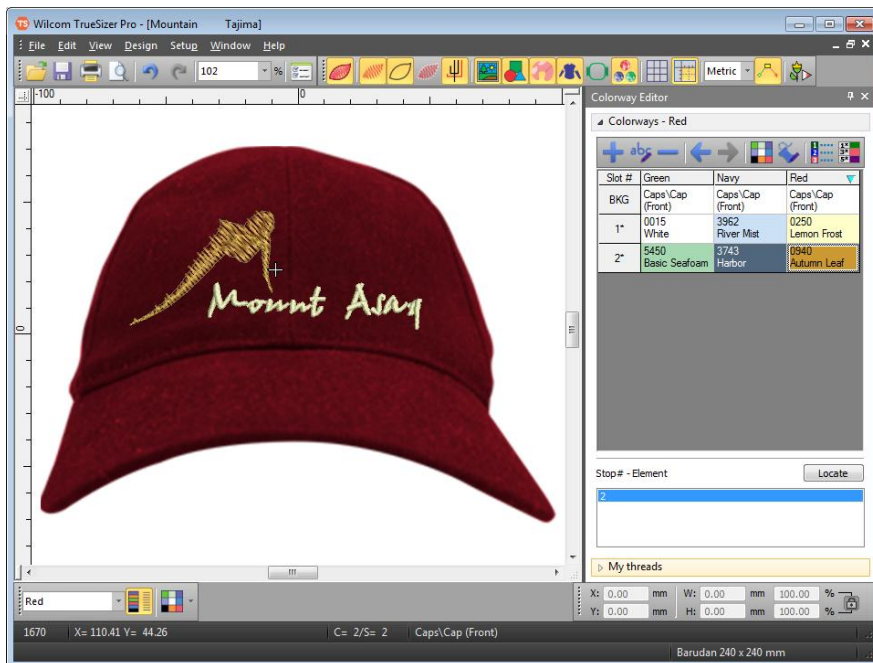
# Wilcom TrueSizer Pro e3 Desktop Release Notes

# Contents

What is Wilcom TrueSizer Pro .....	3
Who is it for? .....	3
What does it do? .....	3
Product keys & activation.....	3
What's new in Wilcom TrueSizer Pro e3 .....	4
Additional languages.....	4
Adding colorways .....	5
Visualizing products .....	5
Assigning threads.....	5
Design hooping .....	6
Free sample designs.....	7
The EMB advantage .....	7
Why not make your own EMB files? .....	8
System requirements.....	8
Supported file formats .....	8
Embroidery file types.....	8
Object file formats .....	9
Commercial stitch file formats.....	9
Home stitch file formats .....	10
Solving problems .....	11
Copyright .....	11

# What is Wilcom TrueSizer Pro

Wilcom TrueSizer Pro e3 is a universal embroidery file conversion utility offering full compatibility between industrial and domestic file formats, as well as full design scalability. It allows you to view, modify, read and convert, and output high quality embroidery through its easy-to-use commands and tools. It is also lets you recolor designs and create multiple colorways for different fabrics. Based on the same core software as Wilcom's acclaimed professional embroidery design software, TrueSizer Pro provides the same unique advantages of the 'all-in-one' EMB file format.



## Who is it for?

Customers may include a range of embroidery specialists, ranging from domestic to commercial, as well as their staff and customers. It is especially intended for sales and customer service staff for the purposes of recoloring existing designs. TrueSizer itself is also intended for customers of Wilcom customers allowing them to view and manipulate EMB design files directly.

## What does it do?

TrueSizer Pro includes all the capabilities of TrueSizer. Both can be used to open, view and scale Wilcom EMB, Bernina ART, and Janome JAN object-based embroidery designs. They can both convert designs to many machine formats as well as generate production worksheets. They can also be used to share designs and design images. In addition to these capabilities, TrueSizer Pro allows you to create and save multiple colorways in EMB format. Designs can be visualized on garment images as well as production hoops. Unlike TrueSizer, multiple designs can be opened simultaneously. Customer approval sheets can be quickly generated.

## Product keys & activation

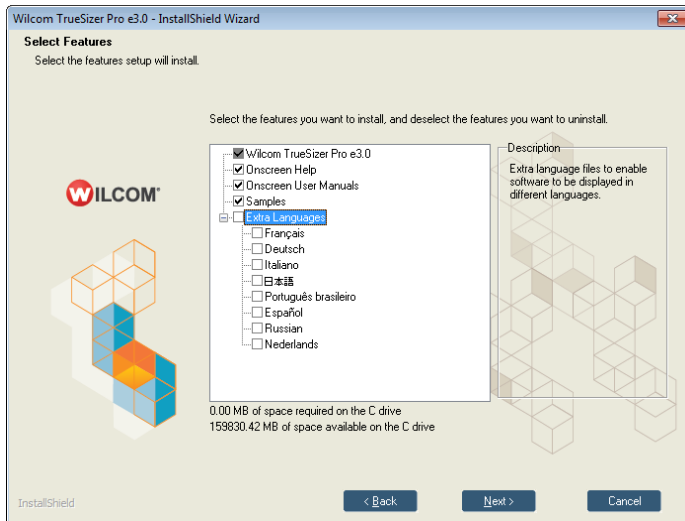
When a customer purchases TrueSizer Pro from the website store, they receive a product key (serial number) which must be entered when the product is first run. The installation program will automatically try to activate the product via internet.

# What's new in Wilcom TrueSizer Pro e3

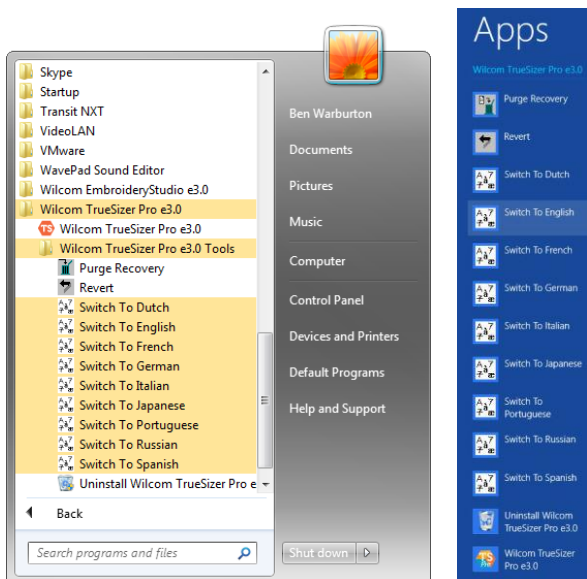
The release of Wilcom's e3 suite of embroidery and multi-decoration Computer-Aided Design and Manufacturing solutions brings with it the new desktop Wilcom TrueSizer Pro e3. In addition to the capabilities of TrueSizer, TrueSizer Pro enjoys the following features...

## Additional languages

When you install TrueSizer Pro, the installation program detects the language of your operating system and, if available, installs that language by default. However, you are prompted to select additional languages as shown below. You can always re-run the installation to add languages if not already selected.



Depending on which languages you have selected for installation, these are available via the Wilcom program group as shown below. Or, if you are running Windows 8, you will find the language switches under the relevant **Apps** menu.



**Note:** The software must be closed before you switch languages. You need to wait for confirmation before re-starting TrueSizer Pro.

## Adding colorways

In addition to viewing design colorways, TrueSizer Pro lets you define your own color schemes for EMB designs. Add or change them to preview an existing design in different colors on different fabrics. Colorways are saved automatically with the EMB design file.



TrueSizer Pro also lets you set the background color of the current colorway for more realistic previews and presentations. Choose from an assortment of swatches, or if you have your own, import them into your design. Almost any artwork can be used – photos, magazine pictures, clipart images, and even fabric samples. The background is saved with the colorway as well.

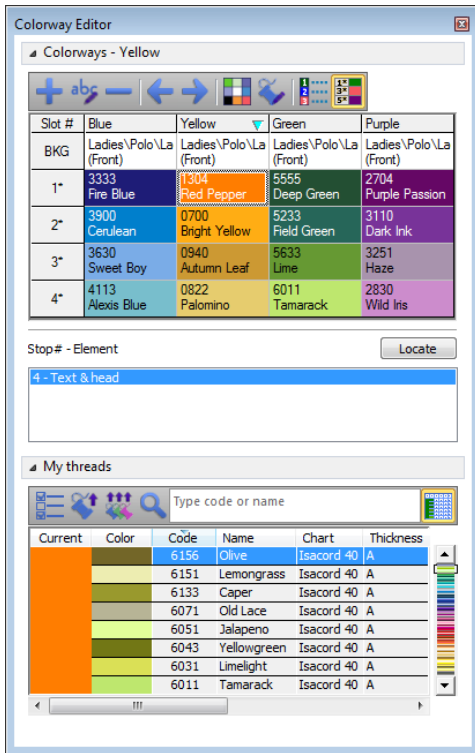
## Visualizing products

TrueSizer Pro lets you choose a garment or product backdrop on which to position your decoration. Use it to display location, size and overall appearance for visualization and approval purposes. The software provides a library of garments of common brands and styles. Choose colors for each product type, including multi-color garments. Even use different garments for different colorways within the same design. Production worksheets provide an option to print approval sheets with or without garment template and description.



## Assigning threads

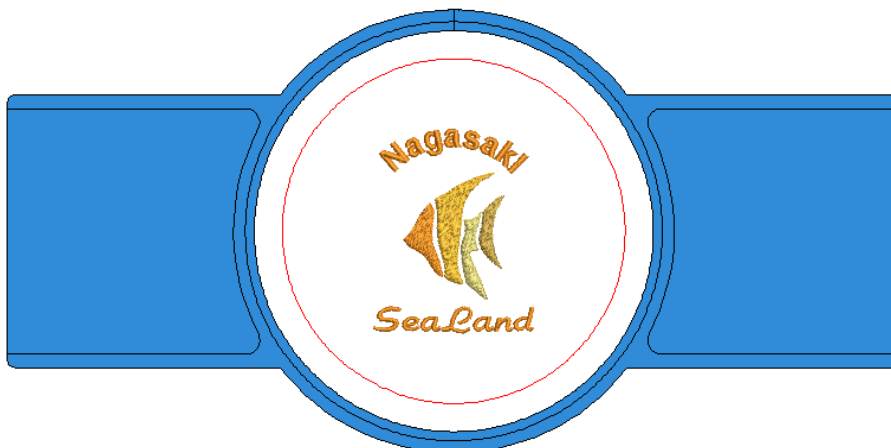
When a design is opened, it includes at least one colorway. This may contain specific thread colors or default colors, currently unassigned to any thread chart. The TrueSizer Pro **Colorway Editor** lets you edit these default colors, add extra color slots, and assign threads from actual thread charts.



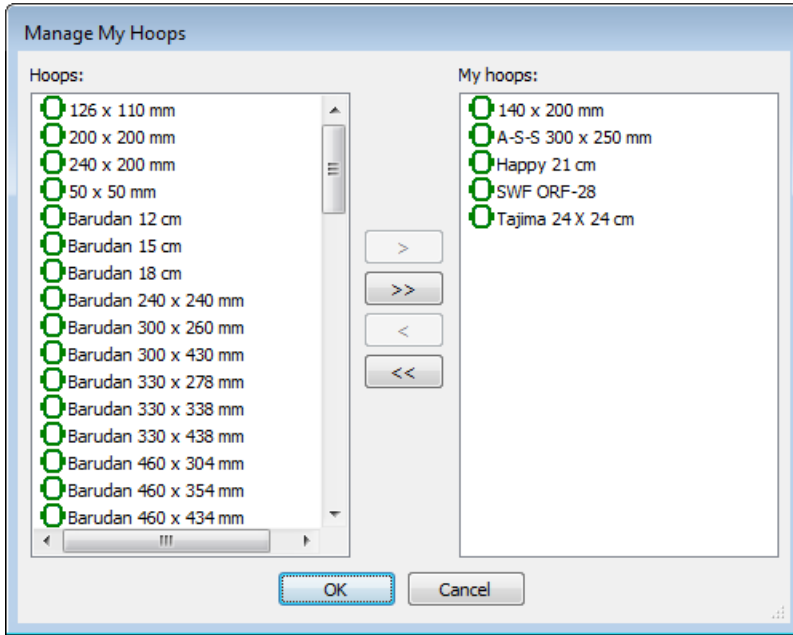
TrueSizer Pro matches design colors automatically to threads from your favourite thread charts. You can assign these one-by-one and modify your selection as you go. Or you can simply prompt TrueSizer Pro to match and assign all threads automatically. Alternatively, enter an exact color code or name using the **Find Thread** function. Assigned threads are printed to the production worksheet for easy reference.

## Design hooping

Fabrics must be hooped before stitching out on the machine. TrueSizer Pro allows you to select from a wide range of standard factory-supplied hoops.

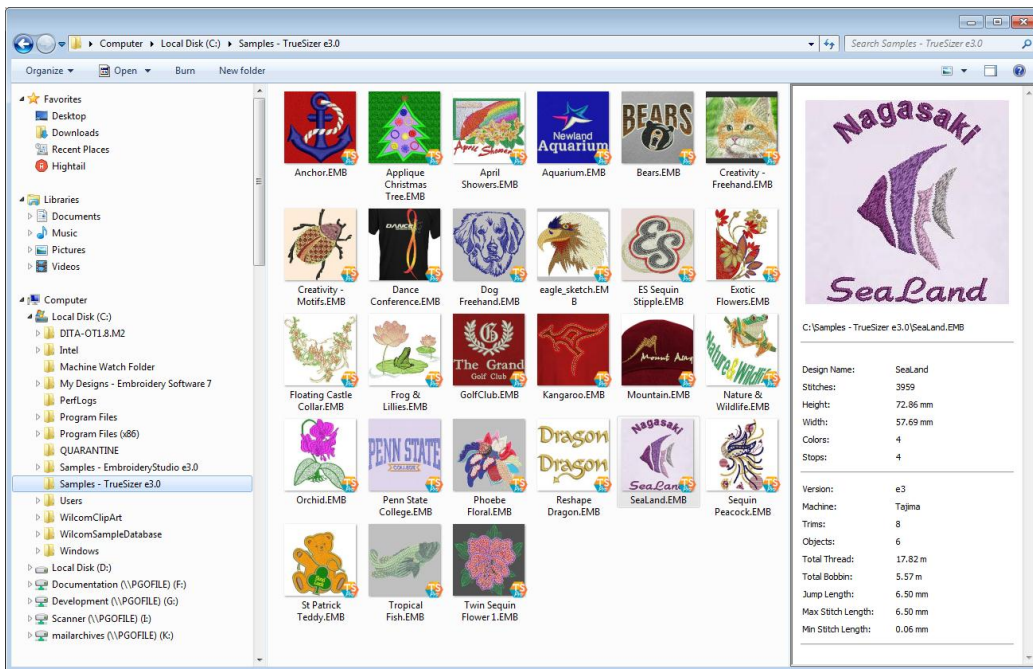


Configure the hoops list to include only those hoops you currently have available for use. The list can be selected from a wide range of commercial brands.



## Free sample designs

TrueSizer Pro is installed with a selection of free designs including a number of sample multi-colorway designs. This is the best place to start in order to try out TrueSizer Pro colorway editing capabilities.



## The EMB advantage

Do you receive designs from digitizing centers or embroiderers? Do you send designs to embroiderers or production houses? If so, Wilcom EMB is the embroidery file format for your day-to-day needs. More



professional designs are created in EMB than any other. Because EMB format combines original outlines (condensed data) with the full original stitch data, customers will receive designs exactly as they were created – complete with any fine-tuning stitch edits that may be included. They can still resize the design from the original outlines with guaranteed rescaling. No confusion switching between multiple expanded and condensed files.

## Why not make your own EMB files?

- For easy embroidery and multi-decoration design, use DecoStudio e3
- For lettering and monogramming, use EmbroideryStudio e3 Lettering
- For editing out-sourced designs and lettering, use EmbroideryStudio e3 Editing
- For professional embroidery and multi-decoration design, use EmbroideryStudio e3 Designing

If you want to do more with your EMB designs, you can easily upgrade to Wilcom's professional range of embroidery design products. For more information, visit <http://www.wilcom.com> today.

## System requirements

Check that your PC meets the TrueSizer Pro e3 system requirements. Check CPU/RAM as well as hard-disk space. The table below shows recommended system requirements.

Hardware item	Minimum requirements
CPU	Intel® Pentium® 4, AMD Athlon™ 64 or AMD Opteron™ or higher
Operating system	* MS Windows® 8.1 (32-bit or 64-bit editions) MS Windows® 7 (32-bit or 64-bit editions) MS Windows Vista® (32-bit or 64-bit editions)
Memory	1GB or higher (more if running multiple applications)
Monitor	Support for Highest Color (32bit) and resolution (1024 X 768) or higher
HDD	At least 2GB free space
Internet	Required for product activation
* All with latest service packs installed	

## Supported file formats

Wilcom TrueSizer Pro supports both native Wilcom EMB file formats and third-party stitch file formats.

### Embroidery file types

Embroidery files fall into two broad categories: outline or 'design' files, and stitch or 'production' files:

Type	Description
Object file	Object files are high-level digitizing system CAD formats which contain object outlines, object properties and in Wilcom's case, also stitch data. When you open an original digitized design file in Wilcom TrueSizer Pro, it can be accurately resized while preserving the original stitching effects and correct densities.
Stitch file	Stitch or 'expanded' designs are low-level formats for direct use by embroidery machines. They contain only stitch coordinates and machine functions. Stitch files are generally not suited to resizing. Because the stitch count does not change, the density increases or decreases with the design size. Thus you should scale stitch designs by no more than $\pm 5-10\%$ because the densities scale by the same amount.



## Object file formats

Apart from native EMB file format, Wilcom TrueSizer Pro also supports the following outline (design) file formats.

Format	Brand	Description	Read	Write
EMB	Wilcom	All versions of EMB up to and including ES e3	●	● <sup>^</sup>
EMT	Wilcom	All versions of EMT up to and including ES e3	●	● <sup>*</sup>
INP	Wilcom	Native DOS outline file format of Wilcom Computer Embroidery Design software	●	
ART	BERNINA	All versions of Artista design files from V1 to V6	●	
AMT	BERNINA	All versions of Artista templates from V1 to V6	●	
CND	Melco	Outline or 'condensed' file format native to Melco machines – no stitch data	●	
JAN	JANOME	All versions of JANOME Digitizer design files to V4	●	
JMT	JANOME	All versions of JANOME Digitizer templates to V4	●	
GNC	Great Notions	Outline file format – no stitch data	●	
PCH	Gunold APS	Outline file format – no stitch data	●	
^ EMB files can be saved back to and including ES2006 * EMT can only be saved to ES e3 format				

## Commercial stitch file formats

Wilcom TrueSizer Pro supports the following commercial stitch (production) file formats.

Format	Brand	Description	Read	Write
100	Toyota	Stitch file format native to Toyota machines	●	●
BRO	Bits & Volts	Contains information about stitch arrays	●	●
DSN	Nova	Older stitch file format	●	
DST	Tajima	Stitch file format native to Tajima machines, with ternary stitch data	●	●
DSB	Tajima	Like DST but with binary data as used on Barudan machines	●	●
DSZ	Tajima	Like DST but with binary data as used on Zangs/ZSK machines	●	●
EMX	Wilcom	Cross stitch data file	●	●
ESD	Wilcom	Wilcom DOS data file	●	●
EXP	Melco	Stitch or 'expanded' file format native to Melco machines	●	●
INB	Inbro	Inbro machines native stitch file	●	●
KSM	Pfaff	Pfaff stitch file format	●	●
STC	Gunold APS	APS stitch file format	●	●
STX	Datastitch	Contains information about stitch arrays	●	●
TAP	Happy	Happy machines native stitch file	●	●
TBF	Tajima	TBF (Tajima Binary Format) file format holds needle-addressing	●	●

information for Tajima needle-addressing capable machines.

U??	Barudan	Stitch file format native to later model Barudan machines	●	●
Z??	ZSK TC	Native ZSK stitch file	●	●

## Home stitch file formats

Wilcom TrueSizer Pro supports the following home stitch file formats.

Format	Brand	Format	Read	Write
ARX	Artista	Cross stitch data file	●	●
CSD	Poem / Huskygram / Singer EU	Contains stitch data	●	●
EXP	Bernina	Contains stitch data and color information	●	
HUS	Husqvarna / Viking	Contains stitch data	●	●
JEF	Janome / Elna / Kenmore	Contains stitch data and color information	●	●
PCD	Pfaff	Contains stitch data	●	●
PCQ	Pfaff	Contains stitch data	●	●
PCS	Pfaff	Contains stitch data	●	●
PEC	Brother / Babylock / Deco	Contains stitch data	●	●
PES	Brother / Babylock / Deco	Contains stitch data and color information	●	●
PMU	Proel	Contains stitch data	●	●
PUM	Proel DOS	Contains stitch data	●	●
SEW	Janome / Elna / Kenmore	Contains stitch data	●	●
SHV	Husqvarna / Viking	Contains stitch data	●	●
VIP	Husqvarna / Viking / Pfaff	Contains stitch data	●	●
VP3	Husqvarna / Viking / Pfaff	Contains stitch data	●	●
XXX	Compucon / Singer	Contains stitch data	●	●

## Solving problems

If you encounter a problem with Wilcom TrueSizer Pro e3, refer to the following sources for help:

- Wilcom TrueSizer Pro onscreen help – select **Help > Onscreen Help**
- Wilcom online support – select **Help > Wilcom Website**
- Windows help – select **Start > Help and Support**
- Windows manual – documentation supplied with your hardware.

### TrueSizer Pro Resources

Wilcom phone and email support is not available for TrueSizer Pro. However, on the TrueSizer Pro support site you will find a downloadable Reference Manual and Release Notes which contain useful product information. You will also find instructions for installation and a document to help you if you encounter problems with activation, as well as itemised system requirements.

For specific TrueSizer Pro support, go to <http://www.wilcom.com/GetHelp/Support.aspx>, and select **TrueSizer Pro Support**.

## Copyright

Copyright © 1990-2014 Wilcom Pty Ltd, Wilcom International Pty Ltd. All rights reserved.

No parts of this publication or the accompanying software may be copied or distributed, transmitted, transcribed, stored in a retrieval system or translated into any human or computer language, in any form or by any means, electronic, mechanical, magnetic, manual, or otherwise, or disclosed to any third party without the express written permission of:

Wilcom Pty Ltd. (A.B.N. 62 062 621 943)  
Level 3, 1-9 Glebe Point Rd, Glebe  
Sydney, New South Wales, 2037, Australia  
PO Box 1094 Broadway NSW 2007  
Phone: +61 2 9578 5100  
Fax: +61 2 9578 5108  
Web: <http://www.wilcom.com>

TrueView™ and Point & Stitch™ are trademarks of Wilcom Pty Ltd. Portions of the imaging technology of this Product are copyrighted by AccuSoft Corporation. The EPS File Import/Export Converter used in this Product is copyrighted by Access Softek, Inc. All rights reserved.